



Muir Beach VFD Fire House Proposal For Location

Mission Statement

There is an urgent and ever-increasing need to **maintain the capabilities of the MBVFD** by developing the infrastructure necessary to **protect lives and property within the community**. The first step in accomplishing this mission is to build a Fire Station that can support the personnel and equipment necessary to protect both the community and the Volunteers.

What we're asking for tonight:

Site approval for planning and development of a new fire house at the Upper Tank location.

Relevant Facts: Wildfires



Due to climate change, wildfires in California are larger and more catastrophic than ever before.

Relevant Facts: Wildfires

SCIENCE
CONNECTIONS

WESTERN WILDFIRES & CLIMATE CHANGE

Wildfires are **increasing** and wildfire season is getting **longer** in the Western U.S.



Average number
of large wildfires
per year

bigger than 1,000 acres



1980-1989

~140



1990-1999

~160



2000-2012

~250

Average length of wildfire season

Early 1970s: 5 months



Today: 7+ months

Climate change is driving up temperatures and **increasing wildfire risk**.



TEMPERATURES ARE RISING

Average annual temperatures
in the Western U.S. have
increased **1.9°F** since 1970.

SNOW MELTS SOONER

Winter snowpack melts
up to 4 weeks earlier than
in previous decades.

FORESTS ARE DRIER, LONGER

Conditions are primed for
wildfires to ignite and spread.



Wildfires are projected to **burn more land** as temperatures continue to rise.

Relevant Facts: Earthquakes



99% Chance of a 6.7 or greater quake in the next 30 years. This would cause major damage in MB.

Relevant Facts: Tsunami



The possibility of a tsunami is real. Such an event would inundate the current fire house.

Relevant Facts: Major Event



If there is a major event, outside help will either be busy elsewhere, or unable to reach us.

Possible Sites for a Fire House in Muir Beach



Location 1: Parcel # 199-150-11. Pump house and bbq grounds



Pros

None

Cons

Too small on east side of creek

Too close to creek to get approval by county

Subject to flooding

Location 2: 199-262-09. Strip @ Upper Tank



Pros
None

Cons
Too small to be usable

Location 3: 199-281-01. Strip Behind Seacape



Pros
None

Cons
Too narrow to be useful
Popular public trail

Location 4: 199-181-03. Strip Next to Jon Rauh



Pros

- Was purchased for our use
- Fairly central
- Suitable size

Cons

- Wetlands, County won't allow construction
- Edge of tsunami zone
- Has flooded in past

Location 5: 199-281-10. Parcel Donated by the Boyers



Pros

Centrally located
Suitable size

Cons

Steep hill would require massive walls
Issues with traffic during events
Was donated as open space

Location 6: 199-201-02. Lower Tank



Pros
None

Cons
On private drive
Too far to travel for emergency response
Would make replacement of the tank
unworkable

Location 7: 199-070-12. Wellsite on Franks Valley Road



Pros
None

Cons
Too far away for emergency response

Location 8: 199-191-06. Parcel @ Pelican Inn



Pros
None

Cons
Too small to build

Location 9: 199-262-11. Upper Tank Site



This is the recommended location. See section following current site.

What's wrong with the current site?



What's wrong with the current site?

Impossible to refurbish

GGNRA Terms & Conditions require Toxic waste liability, which could amount to Millions of Dollars

The CSD has ruled the GGNRA provisions for continued occupancy of the Creamery are unacceptable

The GGNRA has indicated the MBVFD must quit the property, albeit at an undetermined time

What's wrong with the current site?



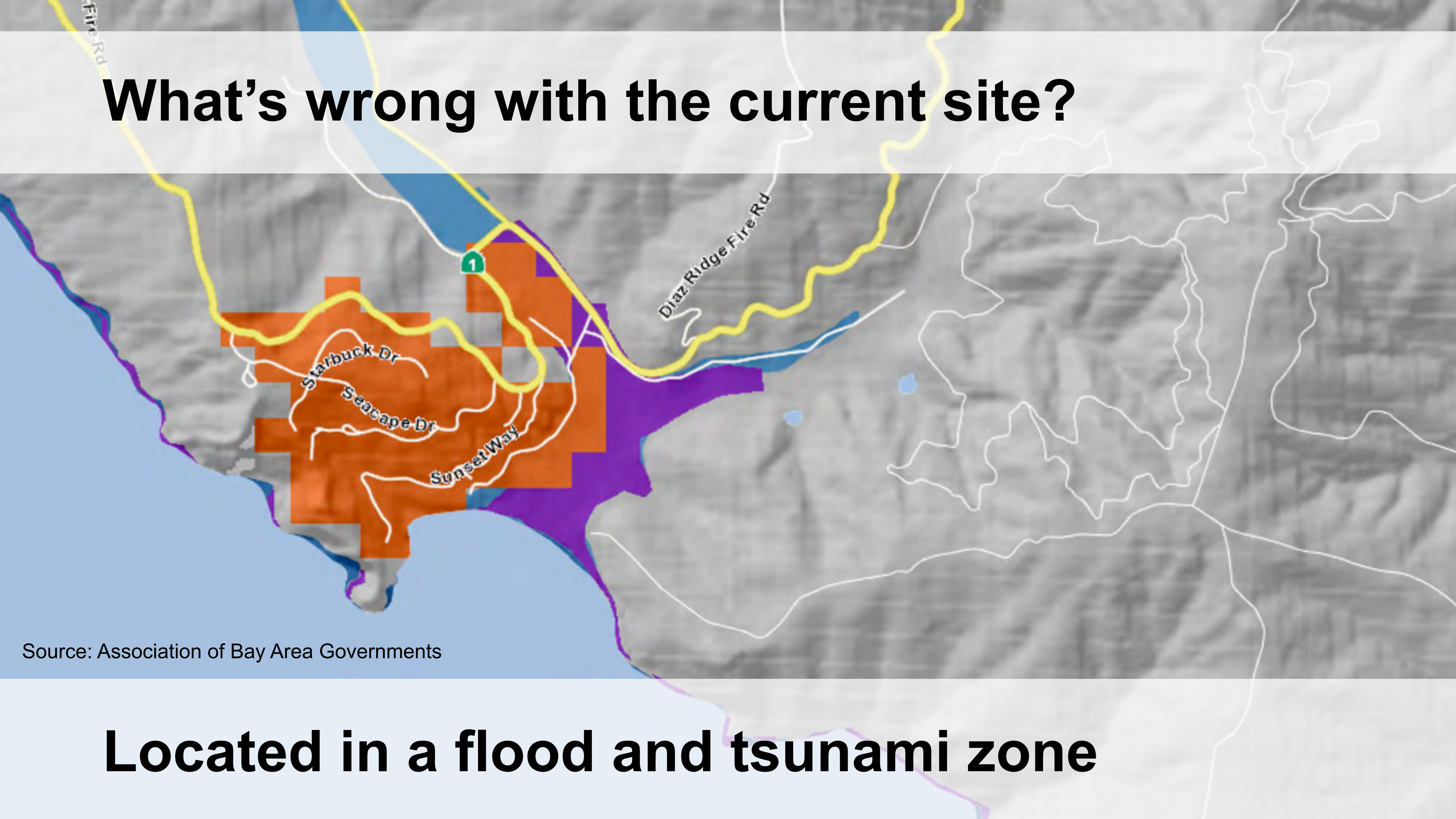
Health and safety: Rats. No washing facilities.

What's wrong with the current site?



Medical Response from Unsanitary Facility

What's wrong with the current site?



Source: Association of Bay Area Governments

Located in a flood and tsunami zone

What's wrong with the current site?



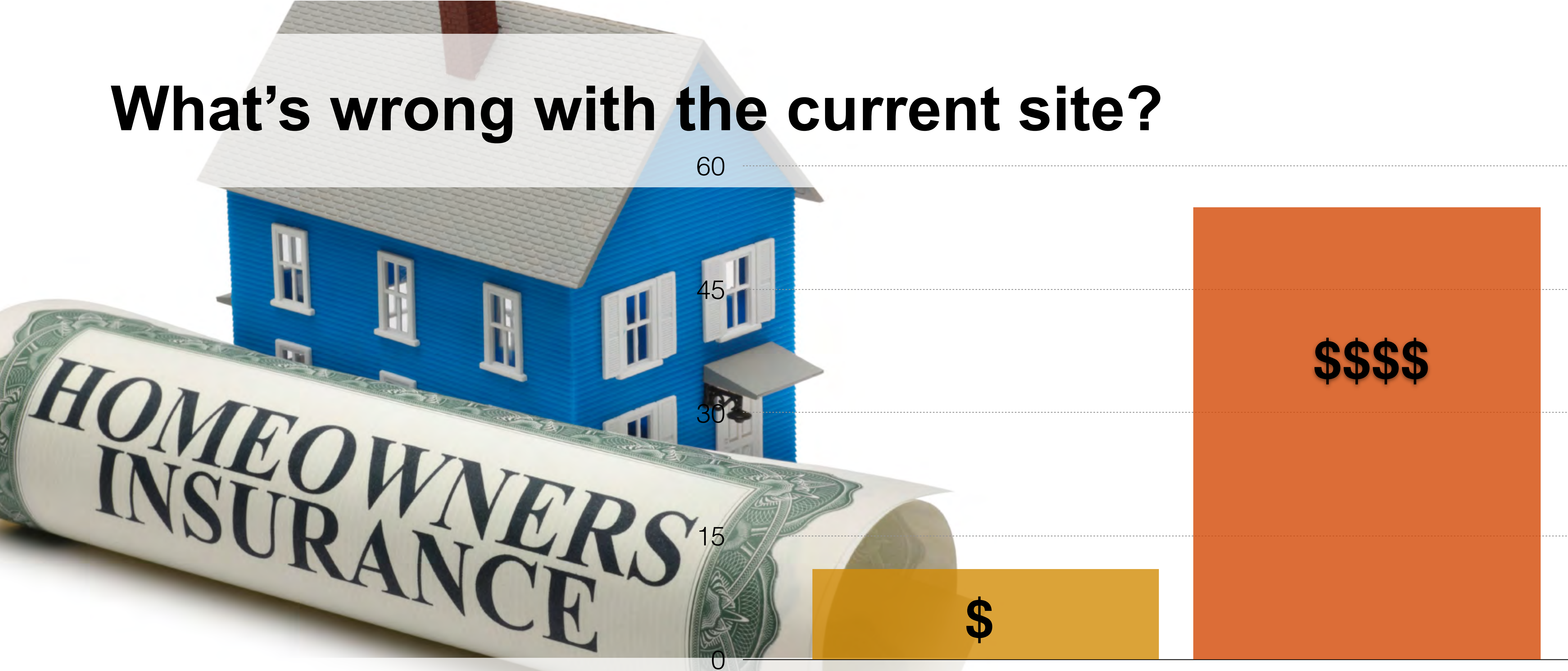
No protection for existing equipment or room for training

What's wrong with the current site?



Hazmat issues from lead, etc.

What's wrong with the current site?



Community's ISO rating is contingent on a Fire House with heating and hot water. Could cost the community \$100's of thousands without these basic requirements.



What's wrong with the current site?

Not suitable as community shelter

What's wrong with the current site?



**Below minimum standards for a Fire House in
Marin County/California**

What's wrong with the current site?

- **Not possible to refurbish this site (Hazmat, Superfund, etc.)**
- **Health and Safety (rats, no cleaning/washing area for biohazards)**
- **Flood/Tsunami**
- **No room for existing equipment**
- **No room for training**
- **Hazmat issues- lead, etc.**
- **Community's ISO rating is contingent on a Fire House with heating and hot water. Could cost the community \$100's of thousands**
- **Not suitable as emergency shelter**
- **Below minimum standards for a Fire House in Marin County/California**

Benefits of the Upper Tank Site



Benefits

- We own it
- Current understanding is that it's buildable (meetings with county, previous surveys, etc)
- Elevation protects from floods
- Bedrock protects from earthquakes
- Better access with multiple ways out
- Ideal location for communications equipment
- Similar response times. Adjacent to helicopter LZ
- Site can accommodate department's needs

What we're asking for tonight:

Site approval for planning and development of a new fire house at the Upper Tank location.