

54

OWNERS CERTIFICATE

KNOW ALL MEN BY THESE PRESENTS: That the undersigned are the only persons having any record title in the lands subdivided and shown upon this map exclusive of streets already dedicated and do hereby consent to the preparation and recordation of this map entitled "MAP of SEACAPE IN THE COUNTY OF MARIN CALIFORNIA", composed of 3 sheets and do hereby offer for dedication for public use the streets shown hereon, namely, SEACAPE DRIVE, AHAB DRIVE, STARBUCK DRIVE and MUIR BEACH OVERLOOK. We also dedicate to public use all public utilities easements, drainage easements, pedestrian easements and the area designated as Park. Said easements are to be kept open and free from buildings and structures of any kind.

We also certify that we are the only persons whose consent is necessary to pass clear title to the lands shown within the colored border lines. We also dedicate so foot non-development easements and non-access easements shown hereon.

As Owners: MIRIAM SMITH

By: Miriam Smith
Miriam Smith

MIWOK CORPORATION, a corporation

By: Paul Smith VICE-PRESIDENT By: John C. Roswell Secretary

As Trustee: MARIN TITLE GUARANTY COMPANY

By: John W. Wray Vice President By: Albert J. Jones, Jr. Vice President

OWNER'S ACKNOWLEDGEMENT

STATE OF CALIFORNIA } s.s.
COUNTY OF MARIN }

On this 21 day of April, 1965, before me, Sydney Blumenthal, a Notary Public in and for the County of Marin, State of California, residing therein, duly commissioned and sworn, personally appeared Miriam Smith, known to me to be the person who executed the within and foregoing instrument, and she acknowledged to me that she had executed the same.

IN WITNESS WHEREOF, I have hereunto set my hand and affixed my official seal here at my office the day and year of this certificate first above written.

Signed Sydney Blumenthal
Notary Public in and for said County of Marin
My Commission Expires 10-19-68

ENGINEER'S CERTIFICATE

I, Kenneth A. Frost, certify that I am a Registered Civil Engineer under the laws of the State of California, that the surveying and checking of the map shown hereon was done under my direction between the months of July 1962 and February 1965, that the survey is true and complete as shown, that the monuments will be of the character and will occupy the positions as shown on this map and that the survey of this map can be retraced from said monuments.

Signed this 21 day of April 1965

Signed Kenneth A. Frost R.C.E. 8181

OWNER'S ACKNOWLEDGEMENT

STATE OF CALIFORNIA } s.s.
COUNTY OF MARIN }

On this 21 day of April, 1965, before me, Sydney Blumenthal, a Notary Public in and for the County of Marin, State of California, residing therein, duly commissioned and sworn, personally appeared LESLIE SMITH and JOHN C. ROSWELL, known to me to be VICE-PRESIDENT and SECRETARY respectively of the corporation that executed the within and foregoing instrument and acknowledged to me that said corporation had executed the same.

IN WITNESS WHEREOF I have hereunto set my hand and affixed my official seal here at my office the day and year of this certificate first above written.

Signed Sydney Blumenthal
Sydney Blumenthal Notary Public in and for said County of Marin
My Commission Expires 10-19-68

TRUSTEE'S ACKNOWLEDGEMENT

STATE OF CALIFORNIA } s.s.
COUNTY OF MARIN }

On this 14 day of May, 1965, before me, E. J. CARRY, a Notary Public in and for the County of Marin, State of California, residing therein, duly commissioned and sworn, personally appeared Eugene R. Hyde and Robert F. Frazier, Jr., known to me vice presidents of the corporation that executed the within and foregoing instrument, and acknowledged to me that said corporation had executed the same.

IN WITNESS WHEREOF, I have hereunto set my hand and affixed my official seal here at my office the day and year first above written.

Signed E. J. Carry
Notary Public

COUNTY SURVEYOR'S CERTIFICATE

I, Donald R. Frost, County Surveyor of the County of Marin, State of California, certify that I have examined this map, that the subdivision shown hereon is substantially the same as it appeared on the tentative map and all approved alterations thereof, that all provisions of the Act of the State of California, known as the Subdivision Map Act and any local ordinances applicable at the time of approval of the tentative map have been complied with and I am satisfied this map is technically correct.

Signed this 14 day of May, 1965

COUNTY RECORDERS CERTIFICATE

Recorded at the request of Co. Planning Commission
Dated JAN. 13 1966 at 20 minutes past 3 o'clock P.M.
in Volume 13 of MAPS, at page 54, Official Records,
Marin County, California
Signed N.T. Giacomini Recorder
Signed St. Crumpley Deputy Recorder
Fee for recording 9.00

COUNTY REDEMPTION OFFICER

I, Stanley J. Fontez, County Redemption Officer for the County of Marin, State of California, do hereby certify that there are no liens for unpaid taxes, State, County, Municipal or others, or for special assessments collected as taxes not yet payable against the tract or subdivision of land shown hereon, or any part thereof.

Signed this 11 day of October, 1965

Signed Stanley J. Fontez by Stanley J. Fontez
Stanley J. Fontez - County Redemption Officer

COUNTY CLERK

I, George Gnos, Clerk of the Board of Supervisors of the County of Marin, State of California, do hereby certify that a bond in the amount fixed by said Board has been filed with said Board, and that said bond, by its terms, is made to inure to the benefit of said County of Marin, and is conditioned for payment of taxes, which may, at the time of the filing of this map, be a lien against the tract or subdivision of land shown upon this map or any part thereof, but not yet payable.

Signed this 14 day of January, 1966

Signed George Gnos
George Gnos - County Clerk

BOARD OF SUPERVISORS

The Board of Supervisors of the County of Marin, State of California, at a regular meeting, held on the 14 day of January, 1966, examined this map of SEACAPE, together with accompanying reports thereon of the County Surveyor and County Redemption Officer, and the said Board of Supervisors, by Resolution No. 2787 duly passed at the meeting aforesaid, approves this map and accepts the offer of dedication of SEACAPE DRIVE, AHAB DRIVE, STARBUCK DRIVE and MUIR BEACH OVERLOOK, and non-access and so foot non-development easements and rejects the offer of dedication of all other easements, and the area designated "PARK".

IN WITNESS WHEREOF the said Board of Supervisors has caused this endorsement to be executed by its Chairman and the County Clerk and its seal to be hereunto affixed.

Signed Robert F. Frazier, Jr.
Chairman of the Board of Supervisors
Marin County, California

COUNTY PLANNING COMMISSION

APPROVED: County Planning Commission of the County of Marin, State of California.

Signed this 30 day of Jan., 1966

Signed George H. Wadsworth
Chairman

MAP OF

SEACAPE

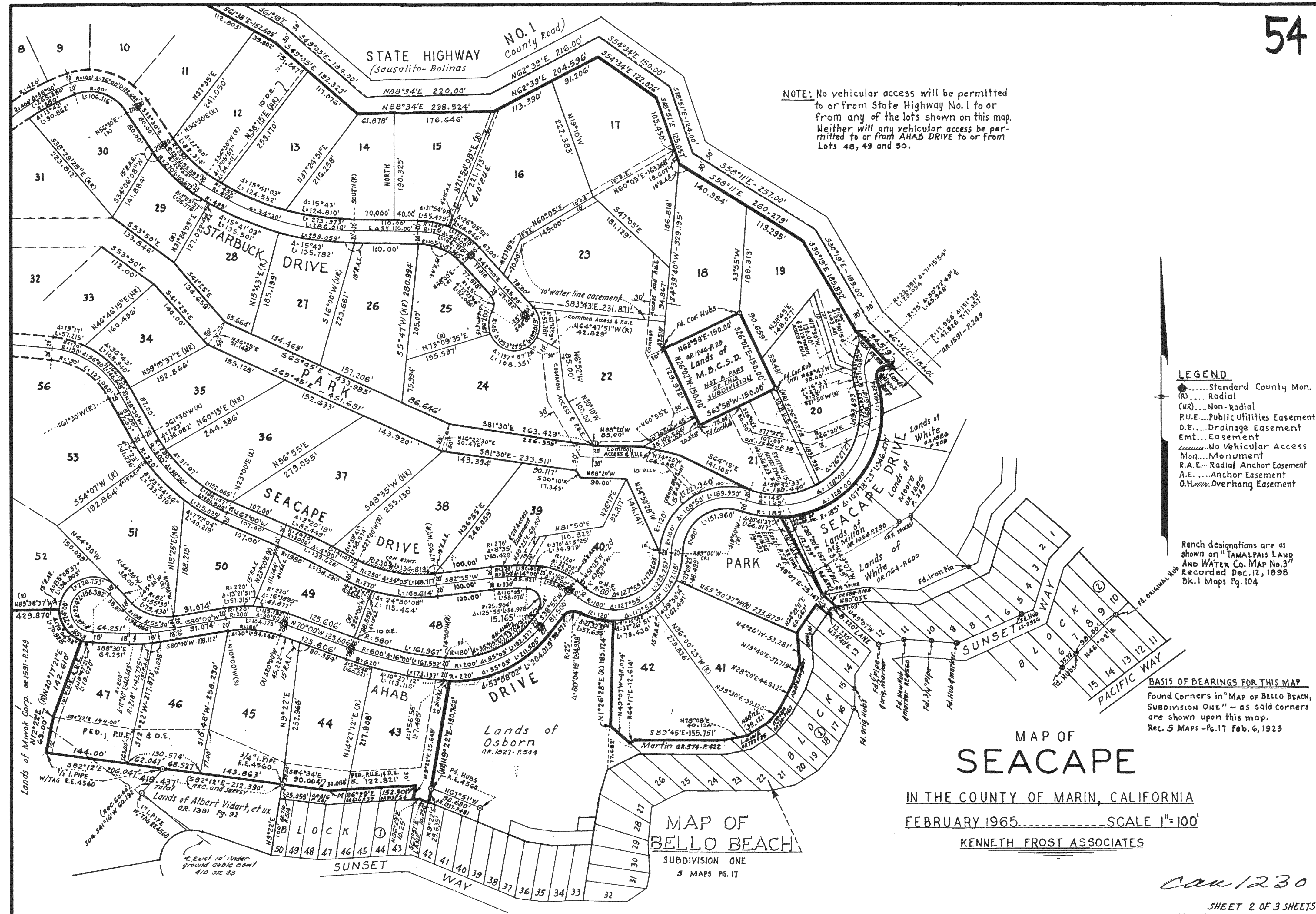
IN THE COUNTY OF MARIN, CALIFORNIA

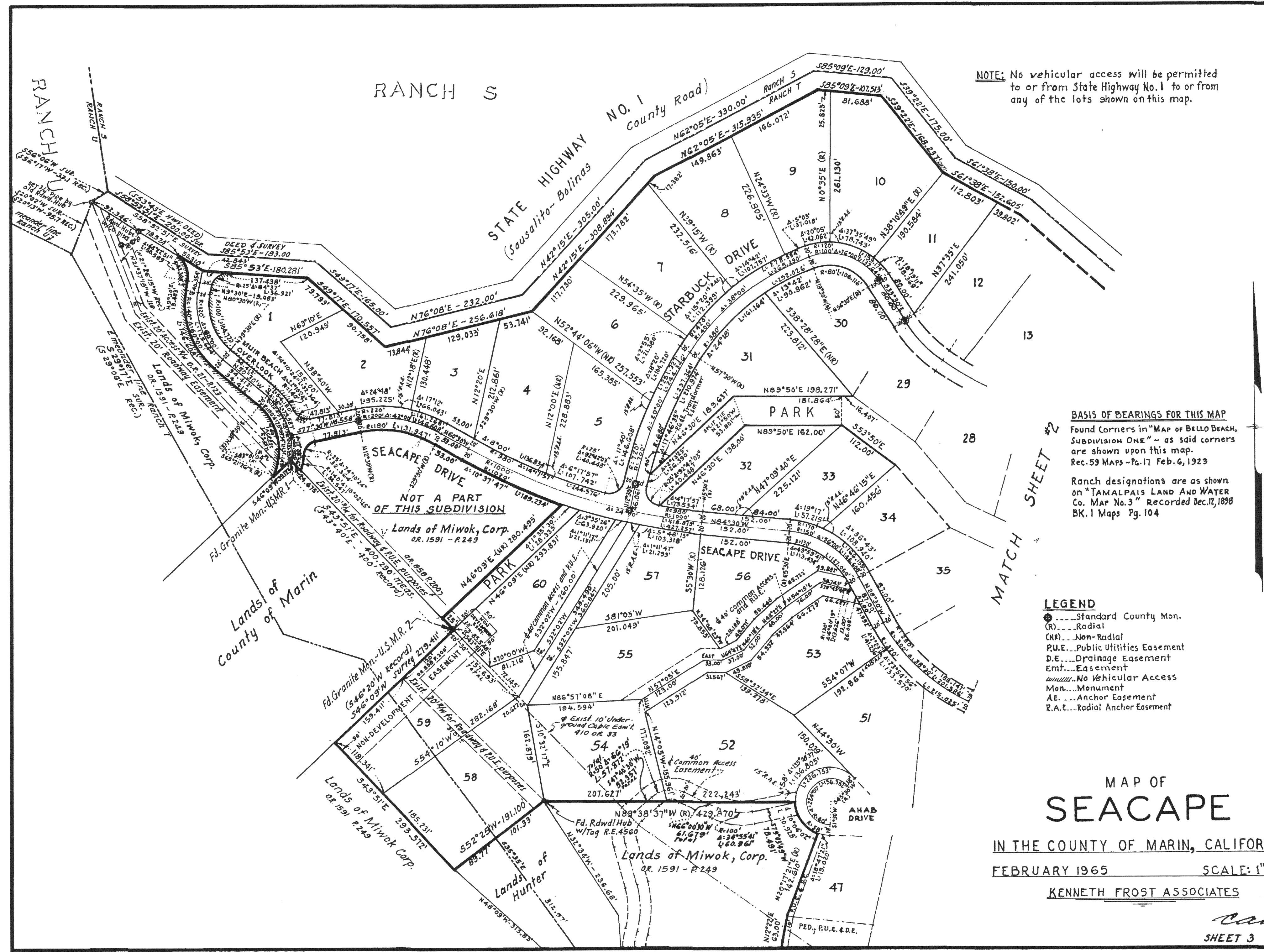
FEBRUARY 1965

KENNETH FROST ASSOCIATES

CAN 1230

SHEET 1 OF 3 SHEETS





NOTE: No vehicular access will be permitted to or from State Highway No. 1 to or from any of the lots shown on this map.

BASIS OF BEARINGS FOR THIS MAP
Found Corners in "Map of Bello Beach, Subdivision One" - as said corners are shown upon this map.
Rec. 59 Maps - Pg. 17 Feb. 6, 1923

Ranch designations are as shown on "TAMALPAIS LAND AND WATER Co. Map No. 3" Recorded Dec. 12, 1898
BK. 1 Maps Pg. 104

- LEGEND**
- Standard County Mon.
 - Radial
 - Non-Radial
 - P.U.E. Public Utilities Easement
 - D.E. Drainage Easement
 - Emt. Easement
 - No Vehicular Access
 - Mon. Monument
 - AE. Anchor Easement
 - R.A.E. Radial Anchor Easement

**MAP OF
SEACAPE**
IN THE COUNTY OF MARIN, CALIFORNIA
FEBRUARY 1965 SCALE: 1"=100'
KENNETH FROST ASSOCIATES

can 1230
SHEET 3 OF 3 SHEETS