

## COUNTY SURVEYOR'S STATEMENT

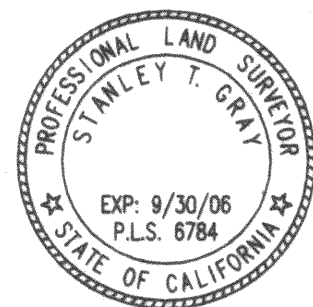
THIS MAP HAS BEEN EXAMINED IN ACCORDANCE WITH SECTION 8766 OF THE PROFESSIONAL LAND SURVEYORS' ACT THIS FIRST DAY OF FEBRUARY, 06

MARIN COUNTY SURVEYOR



## SURVEYOR'S CERTIFICATE

THIS MAP CORRECTLY REPRESENTS A SURVEY MADE BY ME OR UNDER MY DIRECTION IN CONFORMANCE WITH THE REQUIREMENTS OF THE PROFESSIONAL LAND SURVEYOR'S ACT AT THE REQUEST OF MUIR BEACH COMMUNITY SERVICES DISTRICT IN JULY, 2005.



STANLEY T. GRAY PLS 6784  
CERTIFICATE EXPIRES 9/30/06

## REFERENCES

THE FOLLOWING DOCUMENTS WERE REVIEWED AS A PART OF THE BOUNDARY ANALYSIS AND FIELD SURVEY OF THE SUBJECT PROPERTY. THEY ARE CITED HEREIN FOR CLARITY & TO PERPETUATE THE FACT THAT THEY WERE CONSIDERED. MAP REFERENCES ULTIMATELY UTILIZED IN THE CONCLUSION ARE SHOWN NEXT TO THE RELEVANT DIMENSIONS IN BRACKETS [ ].

[A] SUBJECT GRANT DEED TO MUIR BEACH COMMUNITY SERVICES DISTRICT, RECORDED IN BOOK 2404, AT PAGE 311, 24 SEPTEMBER 1970, OFFICIAL RECORDS MARIN COUNTY (ORMC).

[B] "TAMALPAIS LAND AND WATER CO. MAP NO. 3..." FILED 12 DECEMBER 1898 IN BOOK 1 OF MAPS AT PAGE 104, ORMC.

[C] DEED TO COUNTY OF MARIN, RECORDED IN BOOK 376, AT PAGE 342, 11 FEBRUARY 1939, ORMC, FOR MUIR WOODS FRANK VALLEY COUNTY ROAD.

[D] RECORD OF SURVEY, LANDS OF MUIR BEACH COMMUNITY SERVICES DISTRICT, FILED 4 MARCH 2002 IN BOOK 2002 OF MAPS AT PAGE 37, ORMC.

## GENERAL NOTES

- (1) ALL DISTANCES ARE IN TENTHS AND HUNDREDTHS OF FEET UNLESS OTHERWISE NOTED.
- (2) RECORD = MEASURED UNLESS OTHERWISE NOTED.
- (3) CENTERLINE OF EXISTING ROAD WAS HELD AS BEST FIT TO THE CALCULATED CENTERLINE RIGHT OF WAY PER [C].

## BASIS OF BEARING

BASED UPON GPS SURVEY, TWO NGS SURVEY POINTS WERE TIES AND GEODETIC NORTH WAS DETERMINED. ALL BEARINGS HEREIN MENTIONED ARE RELATED THERETO.

## MAPPING ANGLE

ROTATION BETWEEN GEODETIC NORTH AND TRUE NORTH IS 2°35'36" WEST

## SCALE FACTOR

ALL DISTANCES SHOWN ARE GRID DISTANCES. TO CONVERT TO GROUND DISTANCES, MULTIPLY GRID DISTANCES BY 0.991274036

## BOUNDARY NOTE

THE FINAL BOUNDARY FOR THE SUBJECT PROPERTY CANNOT BE DETERMINED WITHIN STANDARD SURVEY ACCURACY OF 1:10,000. THE BASIS FOR THE LOCATION OF THE SUBJECT PARCEL IS AS FOLLOWS: UTILIZING THE HEREON CITED RECORD AND QUASI-PUBLIC RECORD PLATS AND DOCUMENTS WE DETERMINED THE CENTERLINE OF MUIR WOODS-FRANK VALLEY ROAD. THE CENTERLINE WAS PHYSICALLY SURVEYED AND MATCHED TO THAT SHOWN ON 2002 MAPS 37 WITH BEST FIT TO THE ROAD DEED AND PLAT.

FD NGS MONUMENT  
"HPGN CA 04 09"  
N 2150865.08  
E 5949416.58

RANCH V

N89°30'36"E  
2053.11'

RANCH S

FD NGS MONUMENT  
"LITTLE LAGOON"  
N 2143267.75  
E 5959637.09

CENTERLINE OF  
ROAD PER DEED [C]

L=62.33'  
Δ=16°27'24"  
R=217.00'

RANCH R

S15°19'16"E  
75.52'  
S15°37'46"E  
35.82'

MEASURED  
CENTERLINE

L=87.93'  
Δ=4°37'45"  
R=1088.33'

L=62.33'  
Δ=16°27'24"  
R=217.00'

S59°13'36"W  
201.78'

S10°53'15"W  
87.21'

S11°44'24"E  
100.89'

S12°44'24"E  
111.99'

S13°44'24"E  
122.40'

S14°44'24"E  
133.80'

S15°44'24"E  
145.17'

S16°44'24"E  
156.54'

S17°44'24"E  
167.91'

S18°44'24"E  
179.28'

S19°44'24"E  
190.65'

S20°44'24"E  
202.02'

S21°44'24"E  
213.39'

S22°44'24"E  
224.76'

S23°44'24"E  
236.13'

S24°44'24"E  
247.50'

S25°44'24"E  
258.87'

S26°44'24"E  
270.24'

S27°44'24"E  
281.61'

S28°44'24"E  
292.98'

S29°44'24"E  
304.35'

S30°44'24"E  
315.72'

S31°44'24"E  
327.09'

S32°44'24"E  
338.46'

S33°44'24"E  
349.83'

S34°44'24"E  
361.20'

S35°44'24"E  
372.57'

S36°44'24"E  
383.94'

S37°44'24"E  
395.31'

S38°44'24"E  
406.68'

S39°44'24"E  
418.05'

S40°44'24"E  
429.42'

S41°44'24"E  
440.79'

S42°44'24"E  
452.16'

S43°44'24"E  
463.53'

S44°44'24"E  
474.90'

S45°44'24"E  
486.27'

S46°44'24"E  
497.64'

S47°44'24"E  
509.01'

S48°44'24"E  
520.38'

S49°44'24"E  
531.75'

S50°44'24"E  
543.12'

S51°44'24"E  
554.49'

S52°44'24"E  
565.86'

S53°44'24"E  
577.23'

S54°44'24"E  
588.60'

S55°44'24"E  
599.97'

S56°44'24"E  
611.34'

S57°44'24"E  
622.71'

S58°44'24"E  
634.08'

S59°44'24"E  
645.45'

S60°44'24"E  
656.82'

S61°44'24"E  
668.19'

S62°44'24"E  
679.56'

S63°44'24"E  
690.93'

S64°44'24"E  
702.30'

S65°44'24"E  
713.67'

S66°44'24"E  
725.04'

S67°44'24"E  
736.41'

S68°44'24"E  
747.78'

S69°44'24"E  
759.15'

S70°44'24"E  
770.52'

S71°44'24"E  
781.89'

S72°44'24"E  
793.26'

S73°44'24"E  
804.63'

S74°44'24"E  
816.00'

S75°44'24"E  
827.37'

S76°44'24"E  
838.74'

S77°44'24"E  
850.11'

S78°44'24"E  
861.48'

S79°44'24"E  
872.85'

S80°44'24"E  
884.22'

S81°44'24"E  
895.59'

S82°44'24"E  
906.96'

S83°44'24"E  
918.33'

S84°44'24"E  
929.70'

S85°44'24"E  
941.07'

S86°44'24"E  
952.44'

S87°44'24"E  
963.81'

S88°44'24"E  
975.18'

S89°44'24"E  
986.55'

S90°44'24"E  
997.92'

S91°44'24"E  
1009.29'

S92°44'24"E  
1020.66'

S93°44'24"E  
1032.03'

S94°44'24"E  
1043.40'

S95°44'24"E  
1054.77'

S96°44'24"E  
1066.14'

S97°44'24"E  
1077.51'

S98°44'24"E  
1088.88'

S99°44'24"E  
1100.25'

S100°44'24"E  
1111.62'

S101°44'24"E  
1122.99'

S102°44'24"E  
1134.36'

S103°44'24"E  
1145.73'

S104°44'24"E  
1157.10'

S105°44'24"E  
1168.47'

S106°44'24"E  
1179.84'

S107°44'24"E  
1191.21'

S108°44'24"E  
1202.58'

S109°44'24"E  
1213.95'

S110°44'24"E  
1225.32'

S111°44'24"E  
1236.69'

S112°44'24"E  
1248.06'

S113°44'24"E  
1259.43'

S114°44'24"E  
1270.80'

S115°44'24"E  
1282.17'

S116°44'24"E  
1293.54'

S117°44'24"E  
1304.91'

S118°44'24"E  
1316.28'

S119°44'24"E  
1327.65'

S120°44'24"E  
1339.02'

S121°44'24"E  
1350.39'

S122°44'24"E  
1361.76'

S123°44'24"E  
1373.13'

S124°44'24"E  
1384.50'

S125°44'24"E  
1395.87'

S126°44'24"E  
1407.24'

S127°44'24"E  
1418.61'

S128°44'24"E  
1429.98'

S129°44'24"E  
1441.35'

S130°44'24"E  
1452.72'

S131°44'24"E  
1464.09'

S132°44'24"E  
1475.46'

S133°44'24"E  
1486.83'

S134°44'24"E  
1498.20'

S135°44'24"E  
1509.57'

S136°44'24"E  
1520.94'

S137°44'24"E  
1532.31'

S138°44'24"E  
1543.68'

S139°44'24"E  
1555.05'

S140°44'24"E  
1566.42'

S141°44'24"E  
1577.79'

S142°44'24"E  
1589.16'

S143°44'24"E  
1600.53'

S144°44'24"E  
1611.90'

S145°44'24"E  
1623.27'

S146°44'24"E  
1634.64'

S147°44'24"E  
1646.01'

S148°44'24"E  
1657.38'

S149°44'24"E  
1668.75'

S150°44'24"E  
1680.12'

S151°44'24"E  
1691.49'

S152°44'24"E  
1702.86'

S153°44'24"E  
1714.23'

S154°44'24"E  
1725.60'

S155°44'24"E  
1736.97'

S156°44'24"E  
1748.34'

S157°44'24"E  
1759.71'

S158°44'24"E  
1771.08'

S159°44'24"E  
1782.45'

S160°44'24"E  
1793.82'

S161°44'24"E  
1805.19'

S162°44'24"E  
1816.56'

S163°44'24"E  
1827.93'

S164°44'24"E  
1839.30'

S165°44'24"E  
1850.67'

S166°44'24"E  
1862.04'

S167°44'24"E  
1873.41'

S168°44'24"E  
1884.78'

S169°44'24"E  
1896.15'

S170°44'24"E  
1907.52'

S171°44'24"E  
1918.89'

S172°44'24"E  
1930.26'

S173°44'24"E  
1941.63'

S174°44'24"E  
1953.00'

S175°44'24"E  
1964.37'

S176°44'24"E  
1975.74'

S177°44'24"E  
1987.11'

S178°44'24"E  
1998.48'

S179°44'24"E  
2009.85'

S180°44'24"E  
2021.22'

S181°44'24"E  
2032.59'

S182°44'24"E  
2043.96'

S183°44'24"E  
2055.33'

S184°44'24"E  
2066.70'

S185°44'24"E  
2078.07'

S186°44'24"E  
2089.44'

S187°44'24"E  
2100.81'

S188°44'24"E  
2112.18'

S189°44'24"E  
2123.55'

S190°44'24"E  
2134.92'

S191°44'24"E  
2146.29'

S192°44'24"E  
2157.66'

S193°44'24"E  
2169.03'

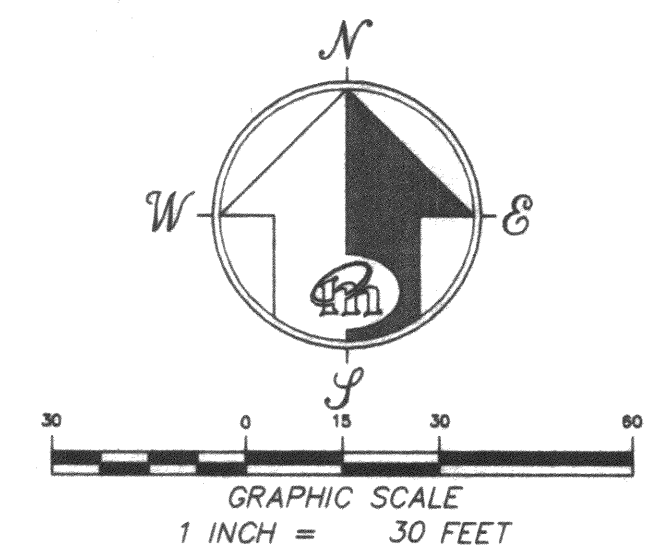
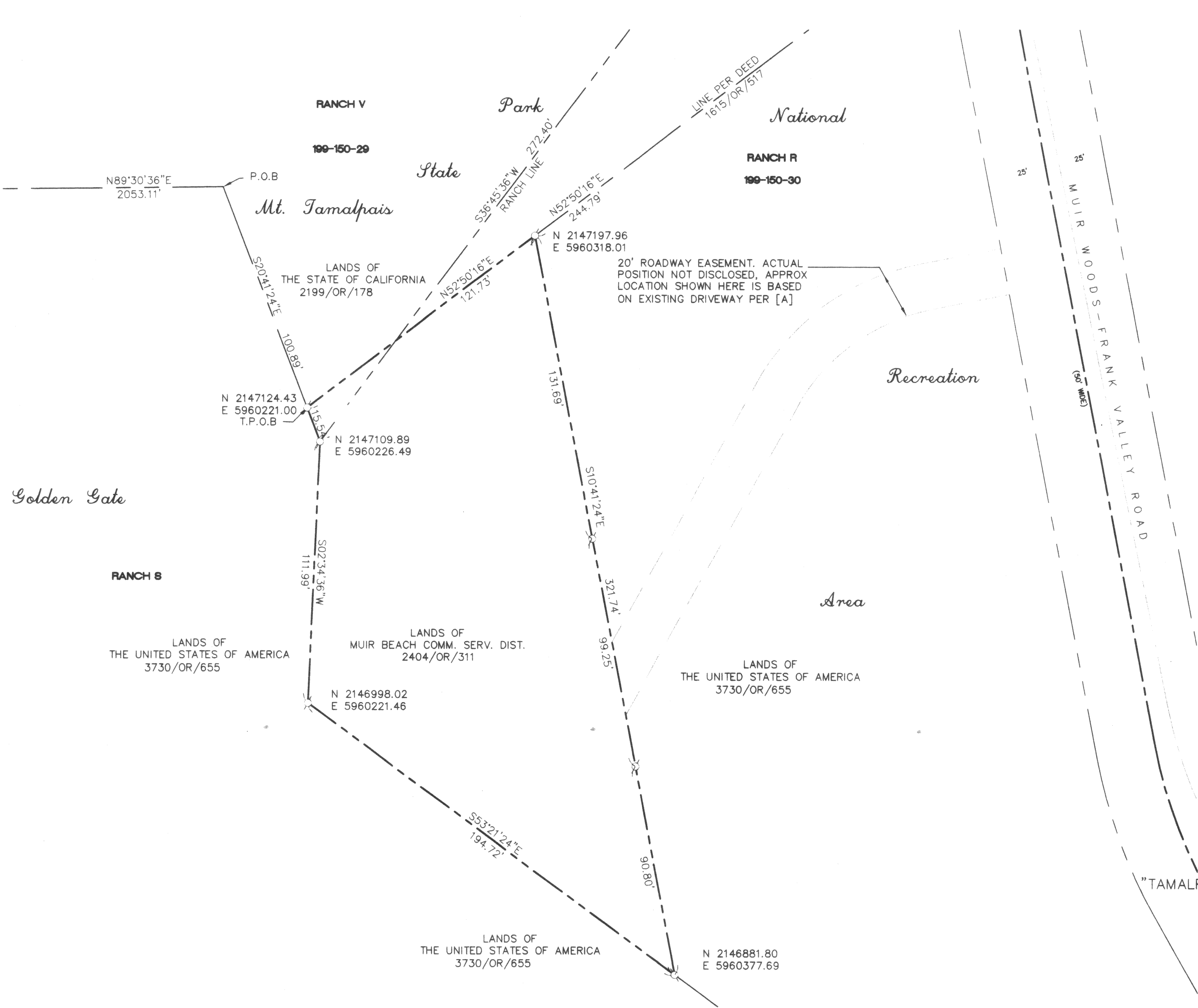
S194°44'24"E  
2180.40'

S195°44'24"E  
2191.77'

S196°44'24"E  
2203.14'

S197°44'24"E  
2214.51'

S198°44'24"E  
2225.88'



LEGEND	
T.P.O.B. (X)	TRUE POINT OF BEGINNING RECORD DIMENSION SET REBAR & CAP, PLS 6784 CENTERLINE PER [C]
---	CENTERLINE PAINT STRIPE
---	RIGHT OF WAY
---	RANCH BOUNDARY
---	CALC&M (C)
---	CALCULATED & MEASURED CALCULATED

RECORD OF SURVEY

LANDS OF  
MUIR BEACH COMMUNITY SERVICES DISTRICT  
PER DEED OF RECORD AS 2404/OR/311  
BEING A PORTION OF RANCH W OF  
"TAMALPAIS LAND & WATER CO., MAP NO. 3..." BOOK 1, PAGE 104  
ALSO BEING A PORTION OF  
MT. TAMALPAIS STATE PARK, FRANK VALLEY  
MARIN COUNTY 01122 CALIFORNIA JULY 2005



MERIDIAN SURVEYING ENGINEERING, INC.  
1812 UNION STREET 777 GRAND AVENUE, SUITE 202  
SAN FRANCISCO 94123 SAN RAFAEL, CA 94901  
(415) 440-4131 (415) 456-5450

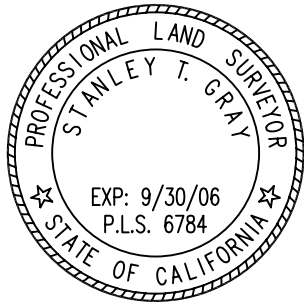


COUNTY SURVEYOR'S STATEMENT  
THIS MAP HAS BEEN EXAMINED IN ACCORDANCE WITH SECTION 8766 OF  
THE PROFESSIONAL LAND SURVEYORS' ACT THIS \_\_\_\_\_ DAY OF \_\_\_\_\_  
.

MARIN COUNTY SURVEYOR

SURVEYOR'S CERTIFICATE

THIS MAP CORRECTLY REPRESENTS A SURVEY MADE BY ME OR UNDER MY  
DIRECTION IN CONFORMANCE WITH THE REQUIREMENTS OF THE PROFESSIONAL  
LAND SURVEYOR'S ACT AT THE REQUEST OF MUIR BEACH COMMUNITY  
SERVICES DISTRICT IN JULY, 2005.



STANLEY T. GRAY PLS 6784  
CERTIFICATE EXPIRES 9/30/06

REFERENCES

THE FOLLOWING DOCUMENTS WERE REVIEWED AS A PART OF THE  
BOUNDARY ANALYSIS AND FIELD SURVEY OF THE SUBJECT PROPERTY.  
THEY ARE CITED HEREIN FOR CLARITY & TO PERPETUATE THE FACT  
THAT THEY WERE CONSIDERED. MAP REFERENCES ULTIMATELY UTILIZED  
IN THE CONCLUSION ARE SHOWN NEXT TO THE RELEVANT DIMENSIONS IN  
BRACKETS [ ].

[A] SUBJECT GRANT DEED TO MUIR BEACH COMMUNITY SERVICES  
DISTRICT, RECORDED IN BOOK 2404, AT PAGE 311, 24 SEPTEMBER  
1970, OFFICIAL RECORDS MARIN COUNTY (ORMC).

[B] "TAMALPAIS LAND AND WATER CO. MAP NO. 3..." FILED 12  
DECEMBER 1898 IN BOOK 1 OF MAPS AT PAGE 104, ORMC.

[C] DEED TO COUNTY OF MARIN, RECORDED IN BOOK 376, AT PAGE  
342, 11 FEBRUARY 1939, ORMC, FOR MUIR WOODS FRANK VALLEY  
COUNTY ROAD.

[D] RECORD OF SURVEY, LANDS OF MUIR BEACH COMMUNITY SERVICES  
DISTRICT, FILED 4 MARCH 2002 IN BOOK 2002 OF MAPS AT PAGE 37,  
ORMC.

GENERAL NOTES

- (1) ALL DISTANCES ARE IN TENTHS AND HUNDREDTHS OF FEET UNLESS OTHERWISE NOTED.
- (2) RECORD = MEASURED UNLESS OTHERWISE NOTED.
- (3) CENTERLINE OF EXISTING ROAD WAS HELD AS BEST FIT TO THE CALCULATED CENTERLINE RIGHT OF WAY PER [C].

BASIS OF BEARING

BASED UPON GPS SURVEY, TWO NGS SURVEY POINTS WERE TIES AND  
GEODETIC NORTH WAS DETERMINED. ALL BEARINGS HEREIN MENTIONED  
ARE RELATED THERETO.

MAPPING ANGLE

ROTATION BETWEEN GEODETIC NORTH AND TRUE NORTH IS 2°35'36"  
WEST

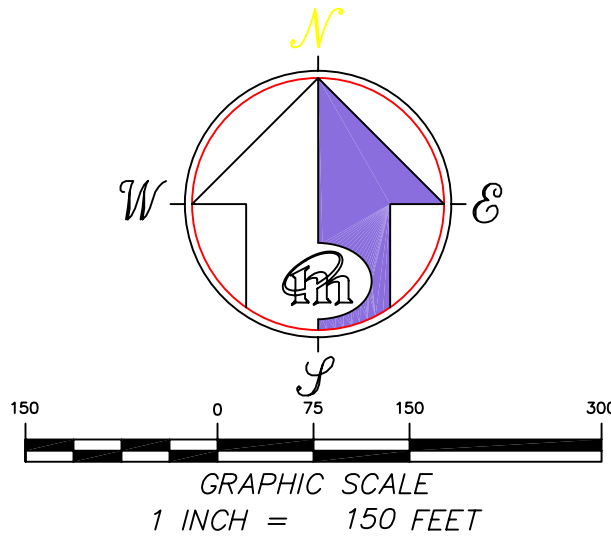
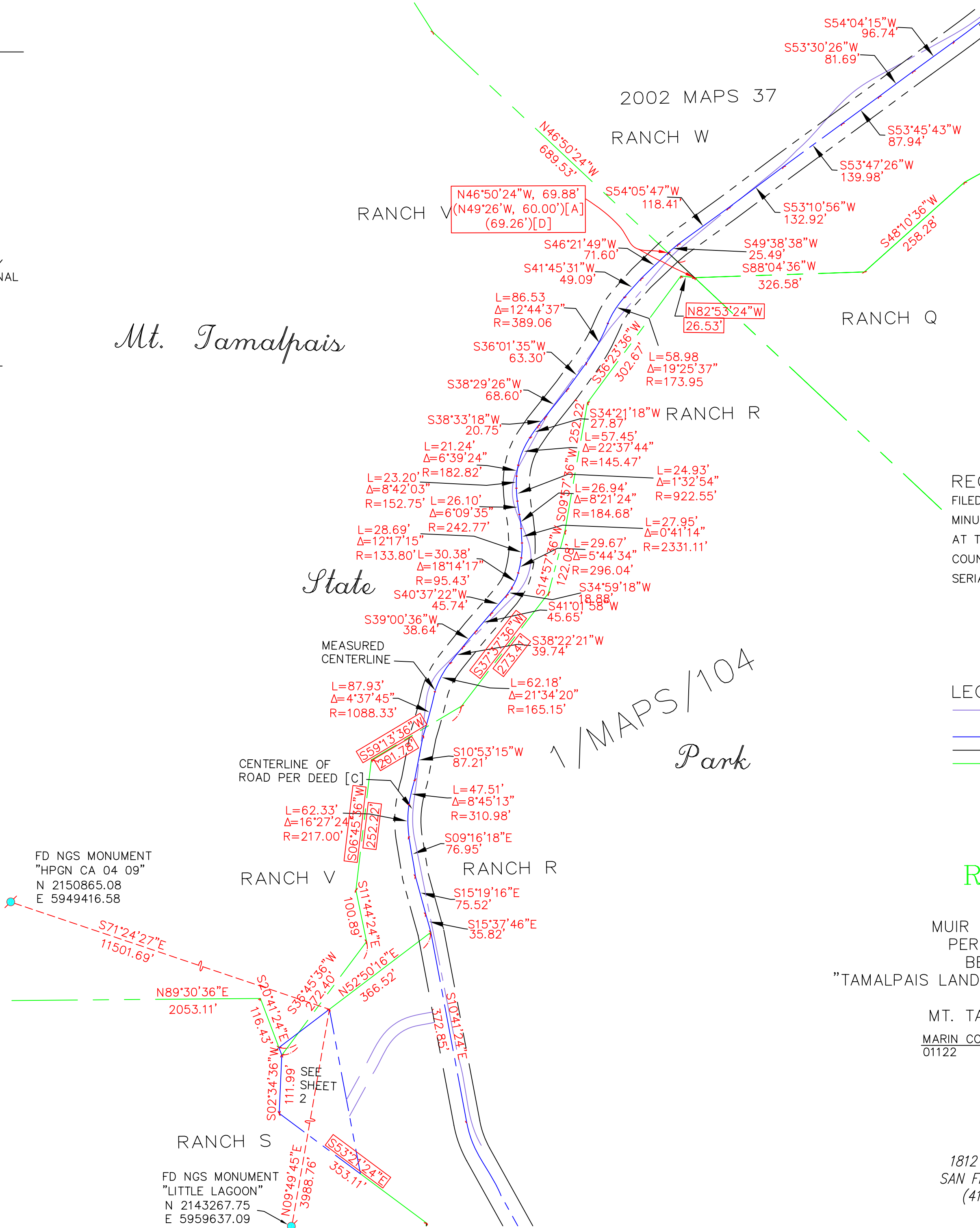
SCALE FACTOR

ALL DISTANCES SHOWN ARE GRID DISTANCES. TO CONVERT TO GROUND  
DISTANCES, MULTIPLY GRID DISTANCES BY 0.991274036

BOUNDARY NOTE

THE FINAL BOUNDARY FOR THE SUBJECT PROPERTY CANNOT BE  
DETERMINED WITHIN STANDARD SURVEY ACCURACY OF 1:10,000.  
THE BASIS FOR THE LOCATION OF THE SUBJECT PARCEL IS AS FOLLOWS:

UTILIZING THE HEREON CITED RECORD AND QUASI-PUBLIC RECORD PLATS  
AND DOCUMENTS WE DETERMINED THE CENTERLINE OF MUIR  
WOODS-FRANK VALLEY ROAD. THE CENTERLINE WAS PHYSICALLY  
SURVEYED AND MATCHED TO THAT SHOWN ON 2002 MAPS 37 WITH BEST  
FIT TO THE ROAD DEED AND PLAT.



RECORDER'S STATEMENT

FILED THIS \_\_\_\_\_ DAY OF \_\_\_\_\_, 20\_\_\_\_, AT \_\_\_\_\_  
MINUTES PAST \_\_\_\_\_M., IN BOOK \_\_\_\_\_ OF **MAPS**, AT PAGE \_\_\_\_\_,  
AT THE REQUEST MERIDIAN SURVEYING ENGINEERING, INC. & MARIN  
COUNTY DPW.  
SERIAL NO. \_\_\_\_\_ FEE: \_\_\_\_\_.

COUNTY RECORDER

DEPUTY

LEGEND

- CENTERLINE PER [C]
- CENTERLINE PAINT STRIPE
- RIGHT OF WAY
- RANCH BOUNDARY
- CALC&M (C)
- CALCULATED & MEASURED
- CALCULATED

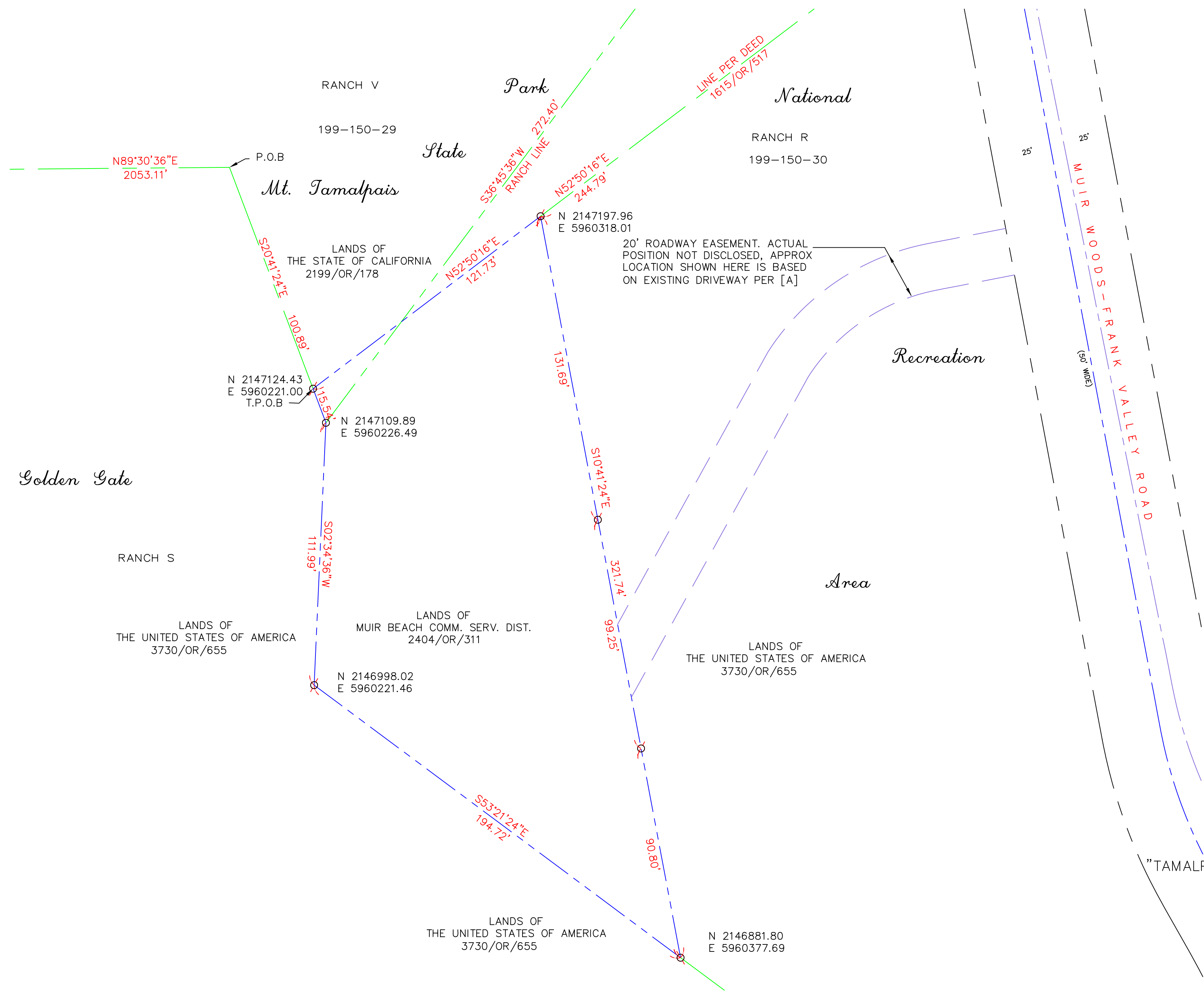
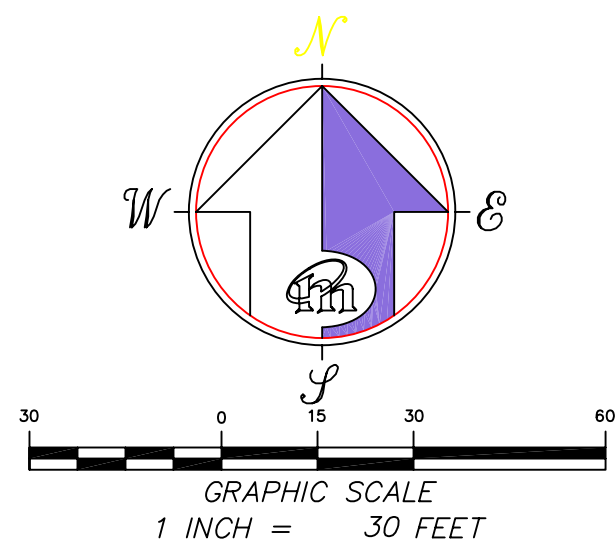
RECORD OF SURVEY

LANDS OF  
MUIR BEACH COMMUNITY SERVICES DISTRICT  
PER DEED OF RECORD AS 2404/OR/311  
BEING A PORTION OF RANCH R, OF  
"TAMALPAIS LAND & WATER CO., MAP NO. 3..." BOOK 1, PAGE 104  
ALSO BEING A PORTION OF  
MT. TAMALPAIS STATE PARK, FRANK VALLEY

MARIN COUNTY CALIFORNIA  
01122 JULY 2005



MERIDIAN SURVEYING ENGINEERING, INC.  
1812 UNION STREET 777 GRAND AVENUE, SUITE 202  
SAN FRANCISCO 94123 SAN RAFAEL, CA 94901  
(415) 440-4131 (415) 456-5450



LEGEND

- |  |                           |  |  |
|--|---------------------------|--|--|
|  | T.P.O.B. (X)              |  | TRUE POINT OF BEGINNING RECORD DIMENSION |
|  | SET REBAR & CAP, PLS 6784 |  | CENTERLINE PER [C]                       |
|  | CENTERLINE PAINT STRIPE   |  | RIGHT OF WAY                             |
|  | RANCH BOUNDARY            |  | CALCULATED & MEASURED                    |
|  | CALC&M (C)                |  | CALCULATED                               |

RECORD OF SURVEY

LANDS OF  
MUIR BEACH COMMUNITY SERVICES DISTRICT  
PER DEED OF RECORD AS 2404/OR/311  
BEING A PORTION OF RANCH W OF  
"TAMALPAIS LAND & WATER CO., MAP NO. 3..." BOOK 1, PAGE 104  
ALSO BEING A PORTION OF  
MT. TAMALPAIS STATE PARK, FRANK VALLEY  
MARIN COUNTY 01122 CALIFORNIA JULY 2005



MERIDIAN SURVEYING ENGINEERING, INC.  
1812 UNION STREET 777 GRAND AVENUE, SUITE 202  
SAN FRANCISCO 94123 SAN RAFAEL, CA 94901  
(415) 440-4131 (415) 456-5450

COUNTY SURVEYOR'S STATEMENT  
THIS MAP HAS BEEN EXAMINED IN ACCORDANCE WITH SECTION 8766 OF  
THE PROFESSIONAL LAND SURVEYORS' ACT THIS \_\_\_\_\_ DAY OF \_\_\_\_\_  
.

MARIN COUNTY SURVEYOR

SURVEYOR'S CERTIFICATE

THIS MAP CORRECTLY REPRESENTS A SURVEY MADE BY ME OR UNDER MY  
DIRECTION IN CONFORMANCE WITH THE REQUIREMENTS OF THE PROFESSIONAL  
LAND SURVEYOR'S ACT AT THE REQUEST OF MUIR BEACH COMMUNITY  
SERVICES DISTRICT IN JULY, 2005.



STANLEY T. GRAY PLS 6784  
CERTIFICATE EXPIRES 9/30/06

REFERENCES

THE FOLLOWING DOCUMENTS WERE REVIEWED AS A PART OF THE  
BOUNDARY ANALYSIS AND FIELD SURVEY OF THE SUBJECT PROPERTY.  
THEY ARE CITED HEREIN FOR CLARITY & TO PERPETUATE THE FACT  
THAT THEY WERE CONSIDERED. MAP REFERENCES ULTIMATELY UTILIZED  
IN THE CONCLUSION ARE SHOWN NEXT TO THE RELEVANT DIMENSIONS IN  
BRACKETS [ ].

[A] SUBJECT GRANT DEED TO MUIR BEACH COMMUNITY SERVICES  
DISTRICT, RECORDED IN BOOK 2404, AT PAGE 311, 24 SEPTEMBER  
1970, OFFICIAL RECORDS MARIN COUNTY (ORMC).

[B] "TAMALPAIS LAND AND WATER CO. MAP NO. 3..." FILED 12  
DECEMBER 1898 IN BOOK 1 OF MAPS AT PAGE 104, ORMC.

[C] DEED TO COUNTY OF MARIN, RECORDED IN BOOK 376, AT PAGE  
342, 11 FEBRUARY 1939, ORMC, FOR MUIR WOODS FRANK VALLEY  
COUNTY ROAD.

[D] RECORD OF SURVEY, LANDS OF MUIR BEACH COMMUNITY SERVICES  
DISTRICT, FILED 4 MARCH 2002 IN BOOK 2002 OF MAPS AT PAGE 37,  
ORMC.

GENERAL NOTES

- (1) ALL DISTANCES ARE IN TENTHS AND HUNDREDTHS OF FEET UNLESS  
OTHERWISE NOTED.
- (2) RECORD = MEASURED UNLESS OTHERWISE NOTED.
- (3) CENTERLINE OF EXISTING ROAD WAS HELD AS BEST FIT TO THE  
CALCULATED CENTERLINE RIGHT OF WAY PER [C].

BASIS OF BEARING

BASED UPON GPS SURVEY, TWO NGS SURVEY POINTS WERE TIES AND  
GEODETIC NORTH WAS DETERMINED. ALL BEARINGS HEREIN MENTIONED  
ARE RELATED THERETO.

MAPPING ANGLE

ROTATION BETWEEN GEODETIC NORTH AND TRUE NORTH IS 2°35'36"  
WEST

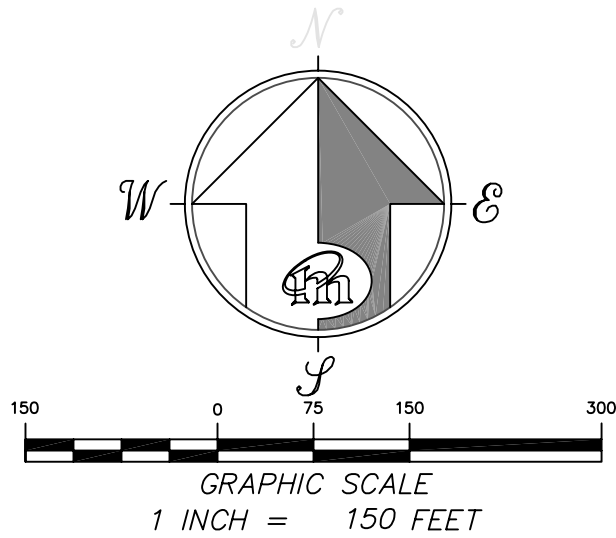
SCALE FACTOR

ALL DISTANCES SHOWN ARE GRID DISTANCES. TO CONVERT TO GROUND  
DISTANCES, MULTIPLY GRID DISTANCES BY 0.991274036

BOUNDARY NOTE

THE FINAL BOUNDARY FOR THE SUBJECT PROPERTY CANNOT BE  
DETERMINED WITHIN STANDARD SURVEY ACCURACY OF 1:10,000.  
THE BASIS FOR THE LOCATION OF THE SUBJECT PARCEL IS AS FOLLOWS:

UTILIZING THE HEREON CITED RECORD AND QUASI-PUBLIC RECORD PLATS  
AND DOCUMENTS WE DETERMINED THE CENTERLINE OF MUIR  
WOODS-FRANK VALLEY ROAD. THE CENTERLINE WAS PHYSICALLY  
SURVEYED AND MATCHED TO THAT SHOWN ON 2002 MAPS 37 WITH BEST  
FIT TO THE ROAD DEED AND PLAT.



RECORDER'S STATEMENT

FILED THIS \_\_\_\_\_ DAY OF \_\_\_\_\_, 20\_\_\_\_, AT \_\_\_\_\_  
MINUTES PAST \_\_\_\_\_M., IN BOOK \_\_\_\_\_ OF MAPS, AT PAGE \_\_\_\_\_,  
AT THE REQUEST MERIDIAN SURVEYING ENGINEERING, INC. & MARIN  
COUNTY DPW.  
SERIAL NO. \_\_\_\_\_ FEE: \_\_\_\_\_.

COUNTY RECORDER

DEPUTY

LEGEND

- CENTERLINE PER [C]
- CENTERLINE PAINT STRIPE
- RIGHT OF WAY
- RANCH BOUNDARY
- CALC&M (C)
- CALCULATED & MEASURED
- CALCULATED

RECORD OF SURVEY

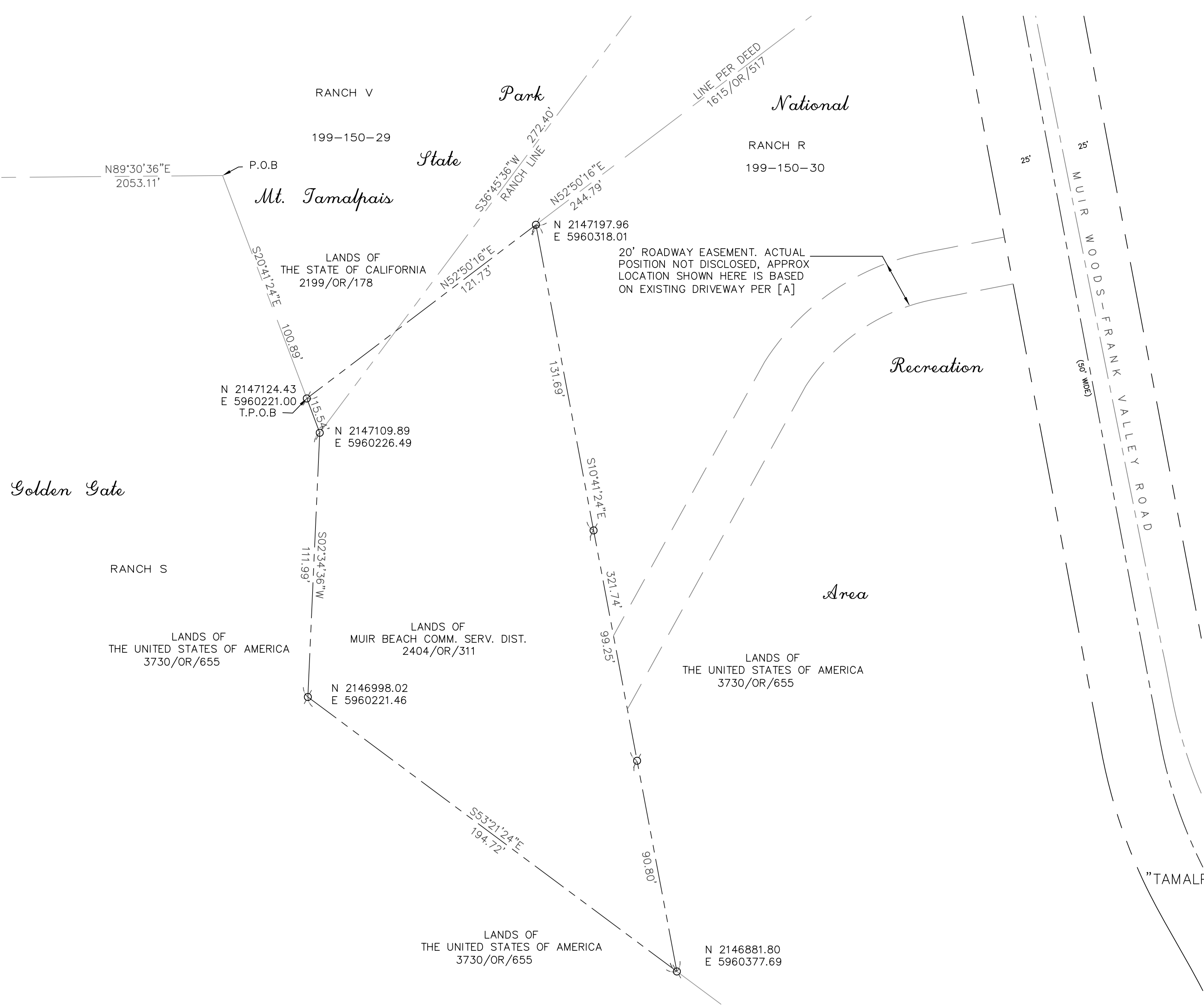
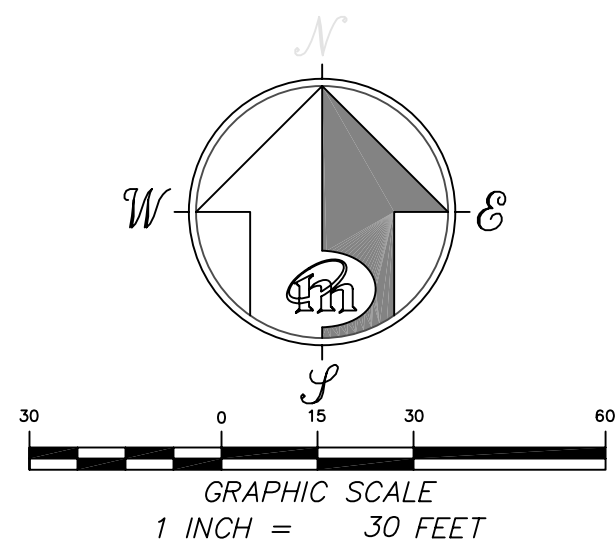
LANDS OF  
MUIR BEACH COMMUNITY SERVICES DISTRICT  
PER DEED OF RECORD AS 2404/OR/311  
BEING A PORTION OF RANCH R, OF  
"TAMALPAIS LAND & WATER CO., MAP NO. 3..." BOOK 1, PAGE 104  
ALSO BEING A PORTION OF  
MT. TAMALPAIS STATE PARK, FRANK VALLEY

MARIN COUNTY CALIFORNIA  
01122 JULY 2005



MERIDIAN SURVEYING ENGINEERING, INC.  
1812 UNION STREET 777 GRAND AVENUE, SUITE 202  
SAN FRANCISCO 94123 SAN RAFAEL, CA 94901  
(415) 440-4131 (415) 456-5450





LEGEND	
	T.P.O.B. (X)
	TRUE POINT OF BEGINNING RECORD DIMENSION
	SET REBAR & CAP, PLS 6784
	CENTERLINE PER [C]
	CENTERLINE PAINT STRIPE
	RIGHT OF WAY
	RANCH BOUNDARY
	CALCULATED & MEASURED
	CALCULATED

## RECORD OF SURVEY

LANDS OF  
MUIR BEACH COMMUNITY SERVICES DISTRICT  
PER DEED OF RECORD AS 2404/OR/311  
BEING A PORTION OF RANCH W OF  
"TAMALPAIS LAND & WATER CO., MAP NO. 3..." BOOK 1, PAGE 104  
ALSO BEING A PORTION OF  
MT. TAMALPAIS STATE PARK, FRANK VALLEY  
MARIN COUNTY 01122 CALIFORNIA JULY 2005

MERIDIAN SURVEYING ENGINEERING, INC.  
1812 UNION STREET 777 GRAND AVENUE, SUITE 202  
SAN FRANCISCO 94123 SAN RAFAEL, CA 94901  
(415) 440-4131 (415) 456-5450