

REFERENCES

THE FOLLOWING DOCUMENTS WERE REVIEWED AS A PART OF THE BOUNDARY ANALYSIS AND FIELD SURVEY OF THE SUBJECT PROPERTY. THEY ARE CITED HEREIN FOR CLARITY & TO PERPETUATE THE FACT THAT THEY WERE CONSIDERED. MAP REFERENCES ULTIMATELY UTILIZED IN THE CONCLUSION ARE SHOWN NEXT TO THE RELEVANT DIMENSIONS IN BRACKETS [].

[A] SUBJECT GRANT DEED TO RAUH FAMILY TRUST, RECORDED AS DOC #2009-70989, DECEMBER 24, 2009, OFFICIAL RECORDS OF MARIN COUNTY (ORMC).

[B] GRANT DEED UNITED STATES OF AMERICA, RECORDED AS DOC #85-014657, APRIL 12, 1985, ORMC.

[C] MAP OF TAMALPAIS LAND AND WATER COMPANY MAP NO. 3, FILED IN VOLUME 1 OF MAPS AT PAGE 104, MARIN COUNTY RECORDS (MCR). COURSES AND DISTANCES FOR THE VARIOUS RANCHES ARE RECORDED IN BOOK "D" OF MISCELLANEOUS RECORDS, ORMC.

[D] RECORD OF SURVEY, FILED FOR RECORD OCTOBER 15, 1965 IN BOOK 4 OF SURVEYS AT PAGE 58, MCR.

[E] OFFICIAL BLM FIELD NOTES AND PLAT, APPROVED JUNE 27, 1988 AND FILED IN VOLUME R 578, PAGES 66-86. NOTES AND PLAT ON FILE WITH THE BUREAU OF LAND MANAGEMENT.

COUNTY SURVEYOR'S STATEMENT

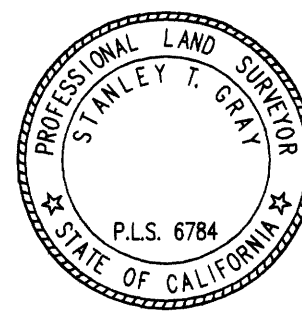
THIS MAP HAS BEEN EXAMINED IN ACCORDANCE WITH SECTION 8766 OF THE PROFESSIONAL LAND SURVEYORS' ACT THIS 21ST DAY OF APRIL, 2011.



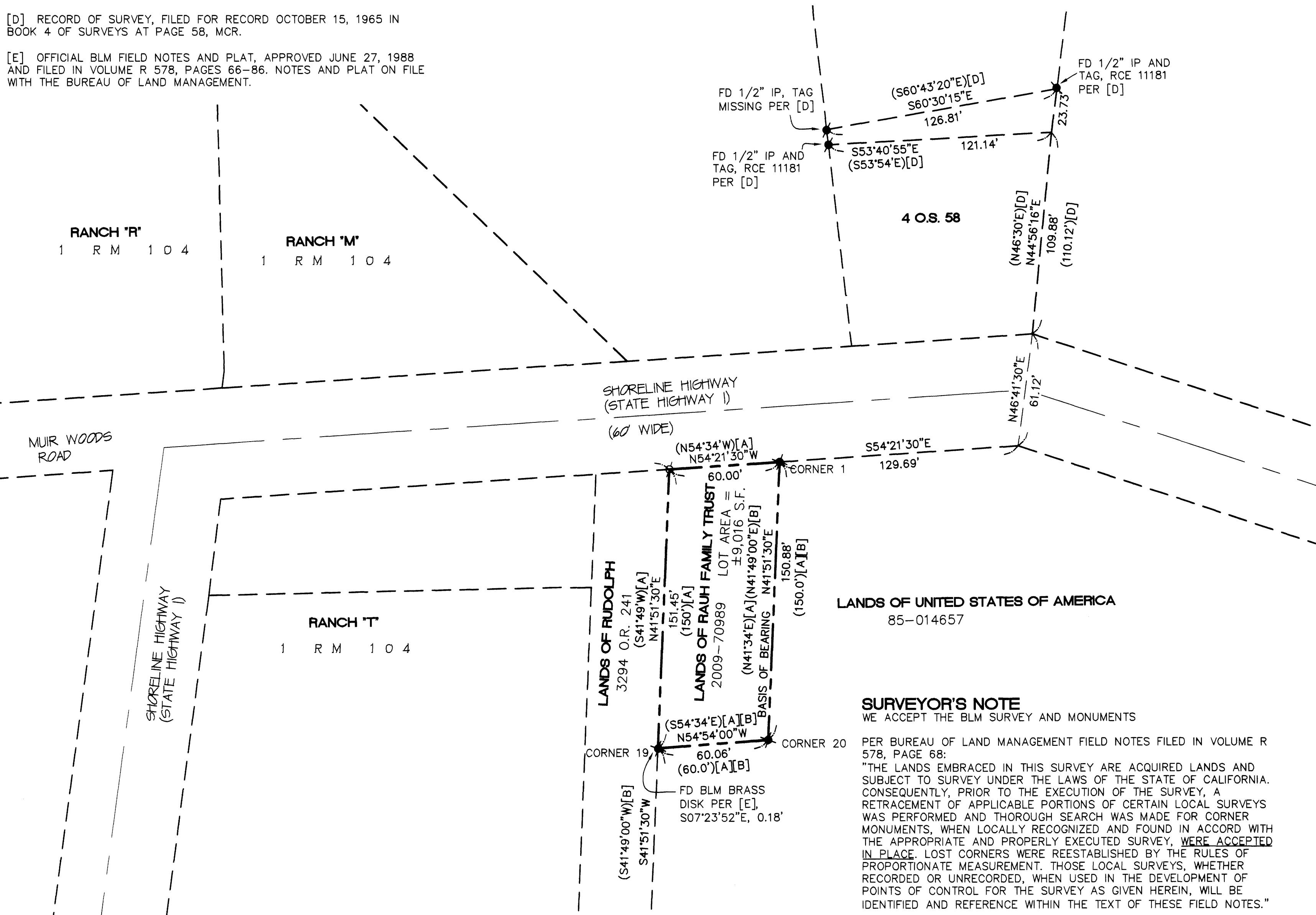
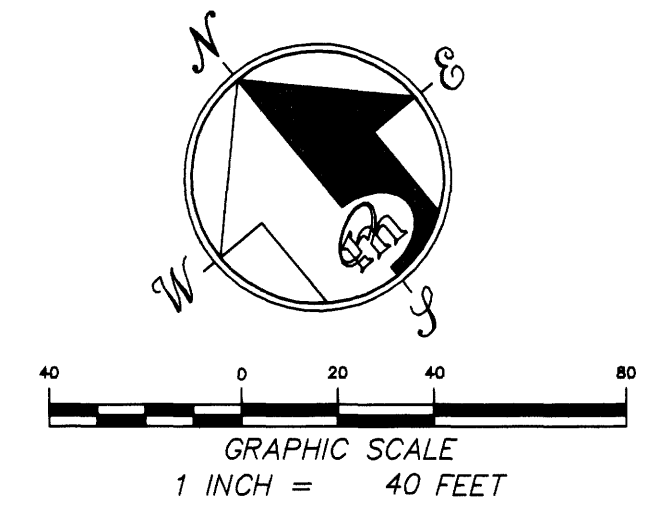
CRAIG TACKABERY
MARIN COUNTY SURVEYOR

SURVEYOR'S STATEMENT

THIS MAP CORRECTLY REPRESENTS A SURVEY MADE BY ME OR UNDER MY DIRECTION IN CONFORMANCE WITH THE REQUIREMENTS OF THE PROFESSIONAL LAND SURVEYOR'S ACT AT THE REQUEST OF MUIR BEACH COMMUNITY SERVICES DISTRICT IN DECEMBER 2010.



STANLEY T. GRAY PLS 6784



RECORDER'S STATEMENT

FILED THIS 22 DAY OF APRIL, 2011, AT 35 MINUTES PAST 9:00A.M., IN BOOK 2011 OF MAPS, AT PAGE 62, AT THE REQUEST MERIDIAN SURVEYING ENGINEERING, INC. & MARIN COUNTY DPW. SERIAL NO. 2011-0021538 FEE: \$10-

Richard A. Benson
COUNTY RECORDER
BY: Don W. [Signature]
DEPUTY

GENERAL NOTES

- (1) ALL DISTANCES ARE IN TENTHS AND HUNDREDTHS OF FEET UNLESS OTHERWISE NOTED.
(2) RECORD = MEASURED UNLESS OTHERWISE NOTED.
(3) DISTANCES PER MAP REFERENCE [E] ARE IN CHAINS. THESE DISTANCES HAVE BEEN MULTIPLIED BY 66 TO CONVERT TO FEET.

BASIS OF BEARING

THE BASIS OF BEARING FOR THIS MAP IS TAKEN TO BE N41°51'30" E BETWEEN FOUND MONUMENTS AS SHOWN UPON MAP ABOVE REFERENCED [E]. ALL BEARINGS HEREIN MENTIONED ARE RELATED THERETO.

LEGEND

- CALC NOT TO SCALE
N.T.S. FOUND
FD OFFICIAL RECORD
O.R. POINT OF BEGINNING
P.O.B. IRON PIPE
IP RECORD DIMENSION
(X) SET REBAR & CAP, PLS 6784
FOUND MONUMENT AS NOTED
FOUND 2-1/2" STEEL POST AND BRASS CAP MARKED T1S R7W
GGNRA PARCEL E COR X LOT 1 1986

RECORD OF SURVEY

LANDS OF RAUH FAMILY TRUST PER DOC #2009-70989 BEING A PORTION OF RANCH "T" PER 1 R.M. 104 MUIR BEACH

MARIN COUNTY 01149-2011 ROS CALIFORNIA JANUARY 2011



MERIDIAN SURVEYING ENGINEERING, INC. 1812 UNION STREET SAN FRANCISCO 94123 (415) 440-4131 777 GRAND AVE, SUITE 202 SAN RAFAEL, CA 94901 (415) 456-5450

SURVEYOR'S NOTE

WE ACCEPT THE BLM SURVEY AND MONUMENTS PER BUREAU OF LAND MANAGEMENT FIELD NOTES FILED IN VOLUME R 578, PAGE 68: "THE LANDS EMBRACED IN THIS SURVEY ARE ACQUIRED LANDS AND SUBJECT TO SURVEY UNDER THE LAWS OF THE STATE OF CALIFORNIA. CONSEQUENTLY, PRIOR TO THE EXECUTION OF THE SURVEY, A RETRACEMENT OF APPLICABLE PORTIONS OF CERTAIN LOCAL SURVEYS WAS PERFORMED AND THOROUGH SEARCH WAS MADE FOR CORNER MONUMENTS, WHEN LOCALLY RECOGNIZED AND FOUND IN ACCORD WITH THE APPROPRIATE AND PROPERLY EXECUTED SURVEY, WERE ACCEPTED IN PLACE. LOST CORNERS WERE REESTABLISHED BY THE RULES OF PROPORTIONATE MEASUREMENT. THOSE LOCAL SURVEYS, WHETHER RECORDED OR UNRECORDED, WHEN USED IN THE DEVELOPMENT OF POINTS OF CONTROL FOR THE SURVEY AS GIVEN HEREIN, WILL BE IDENTIFIED AND REFERENCE WITHIN THE TEXT OF THESE FIELD NOTES."