

**LEGEND**

- ⊙ Standard County Men.
- (R) Radial
- (NR) Non-Radial
- P.U.E. Public Utilities Easement
- D.E. Drainage Easement
- Ent. Easement
- No Vehicular Access
- Monument
- R.A.E. Radial Anchor Easement
- A.E. Anchor Easement
- O.H. Overhang Easement

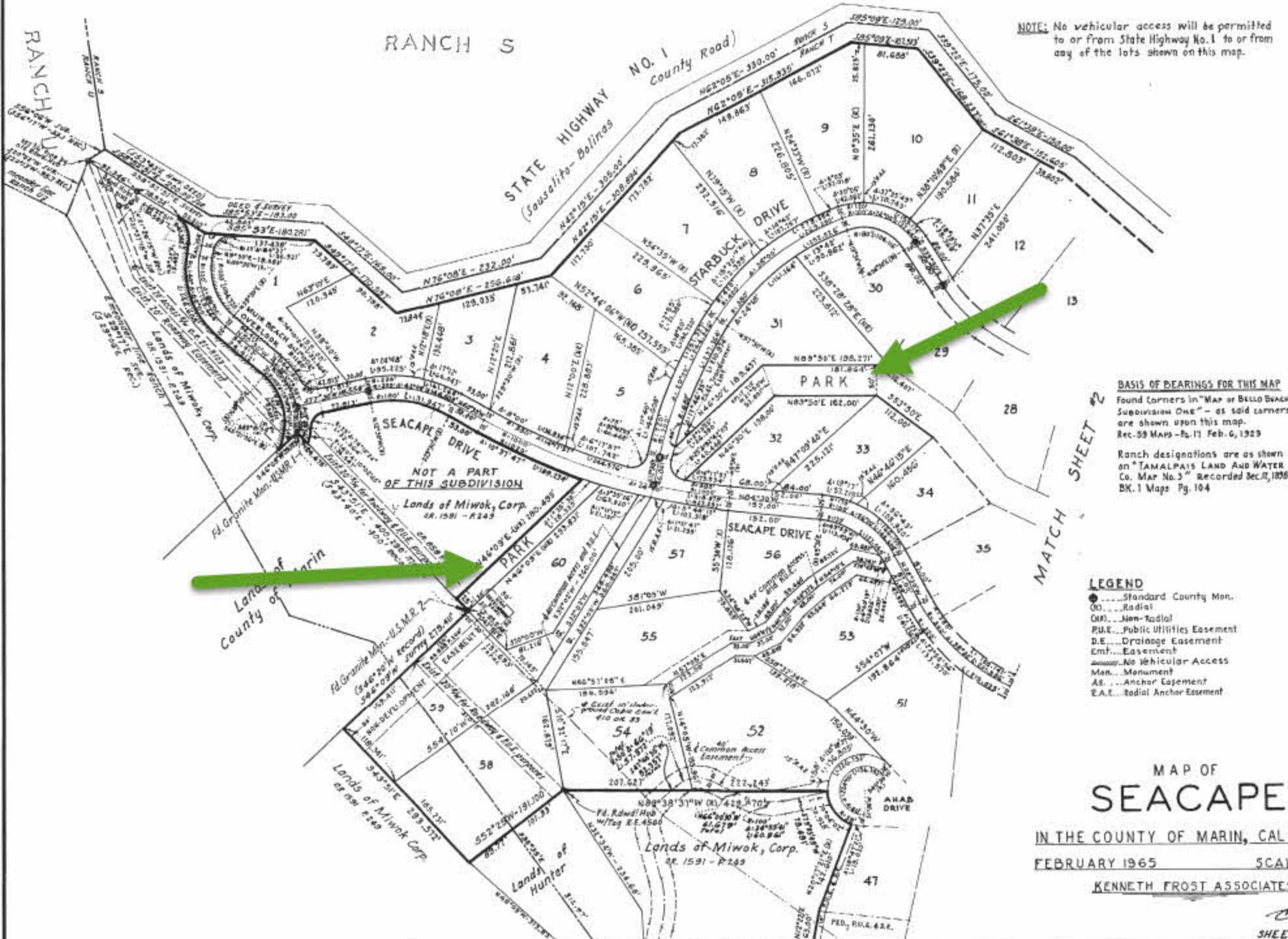
Ranch designations are as shown on TAWALFAIS LAUD AND WATER Co. MAP No. 3 Recorded Dec. 12, 1958 Dk. 1 Maps Pg. 104

**BASIS OF BEARINGS FOR THIS MAP**  
 Found Corners in "Map of Belin Beach, Subdivision One" as sold corners are shown upon this map.  
 Rec. 5 MAPS - 75.17 Feb. 6, 1923

# MAP OF SEACAPE

IN THE COUNTY OF MARIN, CALIFORNIA  
 FEBRUARY 1965 SCALE 1"=100'  
 KENNETH FROST ASSOCIATES

MAP OF BELLO BEACH  
 SUBDIVISION ONE  
 5 MAPS PL. 17



NOTE: No vehicular access will be permitted to or from State Highway No. 1 to or from any of the lots shown on this map.

**BASIS OF BEARINGS FOR THIS MAP**  
 Found corners in "Map of Bello Beach, Subdivision One" - as said corners are shown upon this map.  
 Rec. 58 Maps - 15, 17 Feb. 6, 1929

Ranch designations are as shown on "TAMALPAIS LAND AND WATER Co. Map No. 3" Recorded Dec. 17, 1938 BX. 1 Maps Pg. 104

- LEGEND**
- Standard County Mon.
  - (R) Radial
  - (NR) Non-Radial
  - PUE Public Utilities Easement
  - D.E. Drainage Easement
  - Emt. Easement
  - ..... No Vehicular Access
  - Mon. Monument
  - AS Anchor Easement
  - E.A.E. Radial Anchor Easement

MAP OF  
**SEACAPE**

IN THE COUNTY OF MARIN, CALIFORNIA  
 FEBRUARY 1965 SCALE: 1"=100'  
 KENNETH FROST ASSOCIATES