

REFERENCES

THE FOLLOWING DOCUMENTS WERE REVIEWED AS A PART OF THE BOUNDARY ANALYSIS AND FIELD SURVEY OF THE SUBJECT PROPERTY. THEY ARE CITED HEREIN FOR CLARITY & TO PERPETUATE THE FACT THAT THEY WERE CONSIDERED. MAP REFERENCES ULTIMATELY UTILIZED IN THE CONCLUSION ARE SHOWN NEXT TO THE RELEVANT DIMENSIONS IN BRACKETS [].

[A] SUBJECT GRANT DEED TO MUIR BEACH COMMUNITY SERVICES DISTRICT OF MARIN COUNTY, RECORDED IN SEPTEMBER 24, 1970 IN BOOK 2404 OF OFFICIAL RECORDS AT PAGE 311.

[B] MAP OF SEACAPE, FILED JANUARY 13, 1966 IN VOLUME 13 OF MAPS AT PAGE 54, MARIN COUNTY RECORDS.

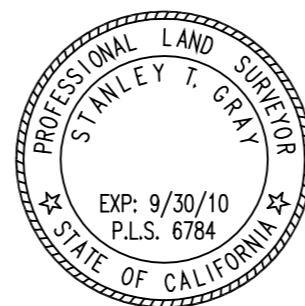
COUNTY SURVEYOR'S STATEMENT

THIS MAP HAS BEEN EXAMINED IN ACCORDANCE WITH SECTION 8766 OF THE PROFESSIONAL LAND SURVEYORS' ACT THIS _____ DAY OF _____ 2009.

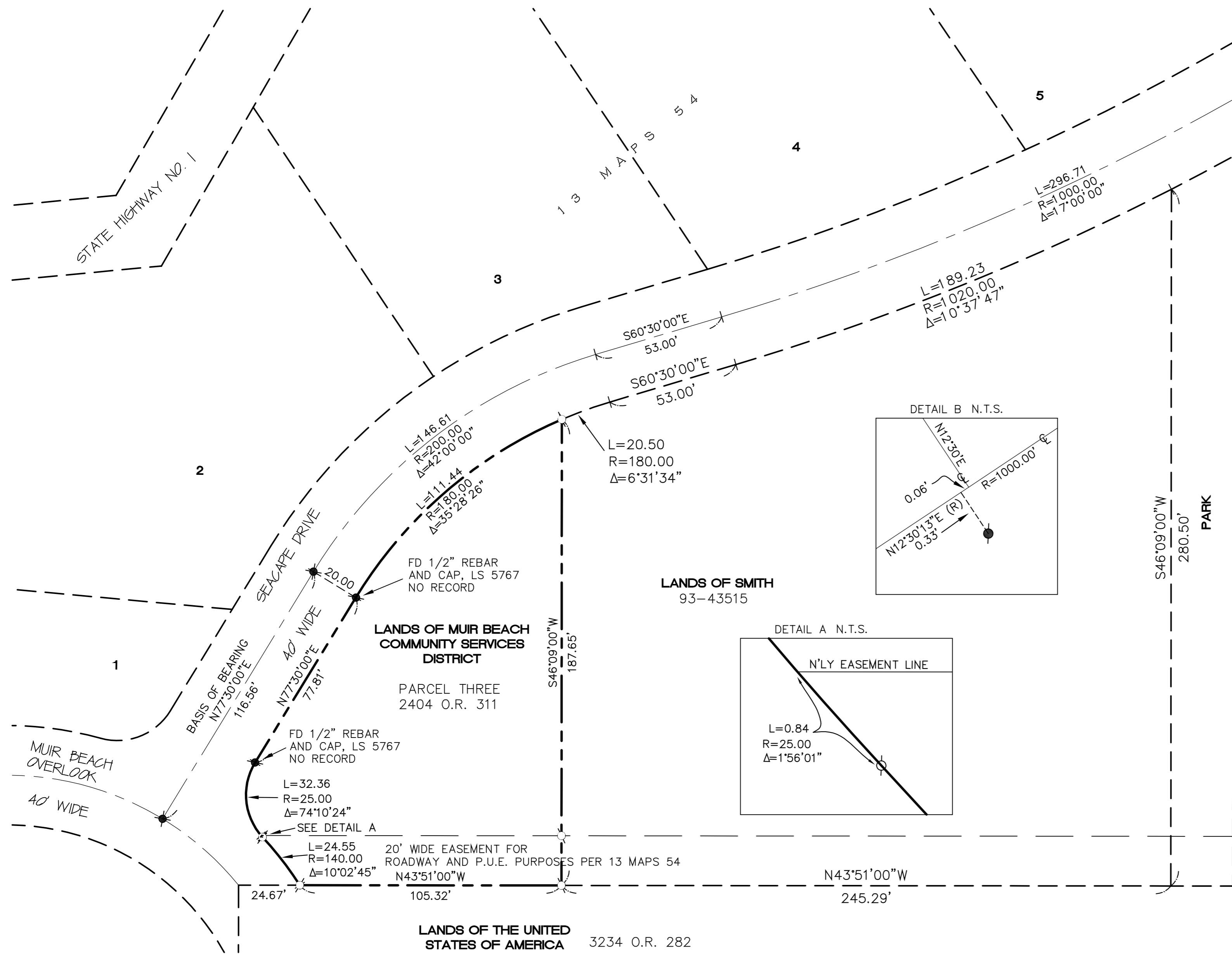
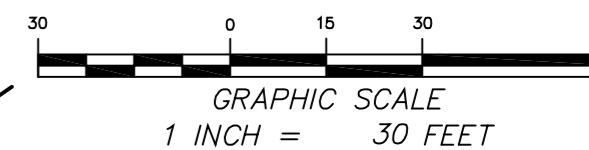
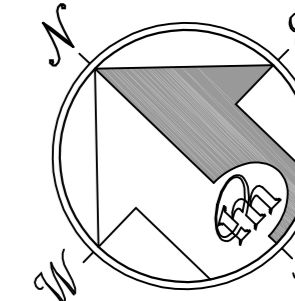
CRAIG TACKABERY
MARIN COUNTY SURVEYOR

SURVEYOR'S STATEMENT

THIS MAP CORRECTLY REPRESENTS A SURVEY MADE BY ME OR UNDER MY DIRECTION IN CONFORMANCE WITH THE REQUIREMENTS OF THE PROFESSIONAL LAND SURVEYOR'S ACT AT THE REQUEST OF THE MUIR BEACH COMMUNITY SERVICES DISTRICT IN SEPTEMBER 2009.



STANLEY T. GRAY
LICENSE EXPIRES 9/30/10



RECORDER'S STATEMENT

FILED THIS _____ DAY OF _____, 20____, AT _____ MINUTES PAST _____ M., IN BOOK _____ OF MAPS, AT PAGE _____, AT THE REQUEST MERIDIAN SURVEYING ENGINEERING, INC. & MARIN COUNTY DPW. SERIAL NO. _____ FEE: _____.

COUNTY RECORDER
BY: _____
DEPUTY

GENERAL NOTES

- (1) ALL DISTANCES ARE IN TENTHS AND HUNDREDTHS OF FEET UNLESS OTHERWISE NOTED.
- (2) RECORD = MEASURED UNLESS OTHERWISE NOTED.

BASIS OF BEARING

THE BASIS OF BEARING FOR THIS SURVEY IS TAKEN TO BE N77°30'00"E BETWEEN FOUND MONUMENTS AS SHOWN UPON MAP ABOVE REFERENCED [B]. ALL BEARINGS HEREIN MENTIONED ARE RELATED THERETO.

LEGEND

CALC	CALCULATED
N.T.S.	NOT TO SCALE
FD	FOUND
O.R.	OFFICIAL RECORD
P.O.B.	POINT OF BEGINNING
IP	IRON PIPE
(X)	RECORD DIMENSION
	SET REBAR & CAP, PLS 6784
	FOUND STANDARD STREET MONUMENT PER [A]
	FOUND MONUMENT AS STATED

RECORD OF SURVEY

LANDS OF MUIR BEACH COMMUNITY SERVICES DISTRICT
BEING PARCEL THREE OF 2404 O.R. 311
MUIR BEACH

MARIN COUNTY 01149-1-ROS CALIFORNIA SEPTEMBER 2009



MERIDIAN SURVEYING ENGINEERING, INC.
1812 UNION STREET 777 GRAND AVE, SUITE 202
SAN FRANCISCO 94123 SAN RAFAEL, CA 94901
(415) 440-4131 (415) 456-5450